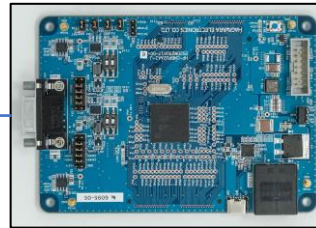
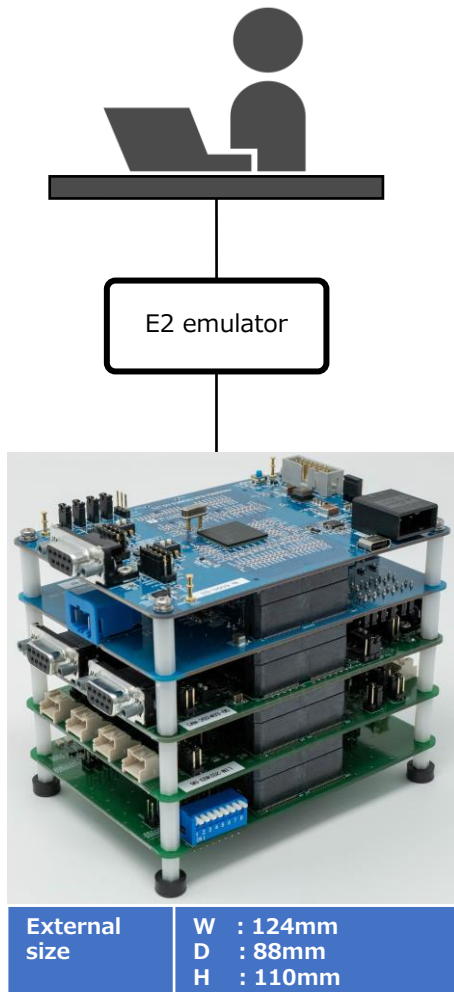


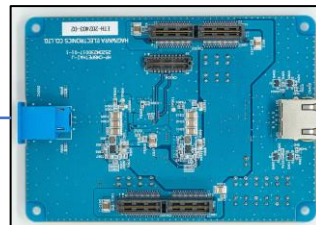
# RH850 Combination Evaluation Board

## ~ Expand by stacking the functions you need, the optimal compact board ~



### Microcomputer Board

Category	Function
MCU	RH850/U2A8 292pin
Communication	CAN-FD ( Partial CAN Tr ) x2
Debug	UART x1, JTAG x1
Power	DC +12V, USB-C



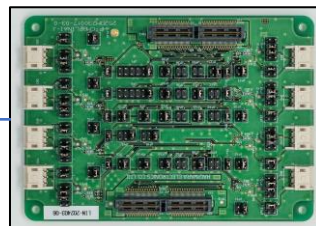
### Ethernet Board

Category	Function
Communication	100/1000BASE-TX x1 ( MII/RMII ) TC10 100/1000BASE-T1+MACsec x1 ( SGMII )



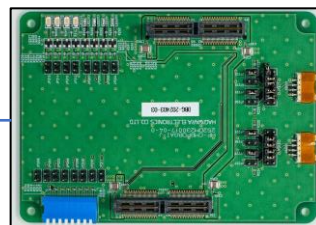
### CAN-FD Board

Category	Function
Communication	CAN-FD x8



### LIN Board

Category	Function
Communication	LIN x8



### I2C Board

Category	Function
Communication	I2C x2
Others	LED x8, DIP-SW x8

For more information, please contact our sales department or the email address below.

### Contact Us

Engineering Solutions Division  
Hagiwara Electronics Co., Ltd.

TEL : +81-52-931-3543  
E-mail : [Info-tc@hagiwara.co.jp](mailto:Info-tc@hagiwara.co.jp)

Expand  
additional  
features

We also develop  
custom boards and custom cases.

## Features of Evaluation Board

### Features of Microcomputer Board

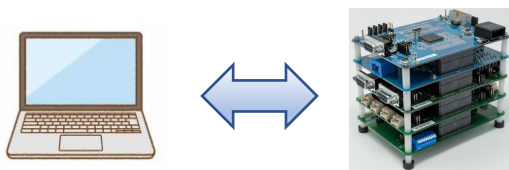
- ✓ Simple HW configuration consisting of RH850 microcomputer and CAN-FD (2ch)
- ✓ Selectable input power sources: DC 12V or USB-C
- ✓ External oscillator of RH850 microcomputer can be freely changed
- ✓ JTAG and USB-UART debugging is available
- ✓ Low power consumption control with Partial-CANFD
- ✓ CAN bus fault injection (Forced Recessive, RXD Forced Low) is possible by jumper setting
- ✓ Installation of through-hole points for all control signals (to monitor with an oscilloscope)
- ✓ All control signals are placed on the bottom connector, allowing free use

### Features of Expansion Board

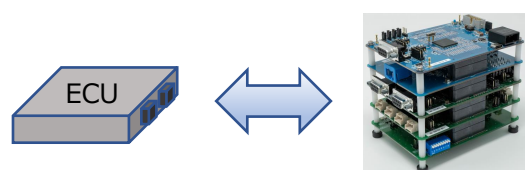
- ✓ Microcomputer pin assignment is selected by jumper setting
- ✓ Fault injection of communication functions is possible by jumper setting
  - CAN-FD: Forced recessive, RXD Forced Low
  - LIN : RXD Forced Low

## Use Case

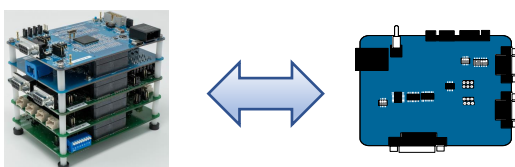
1. Checking the operation of your software



2. The opposing equipment for ECU evaluation



3. Early realization of Proof of Concept  
(This evaluation board + Function enhancement)



4. Evaluation of newly adopted devices  
(This evaluation board + New devices)

